



**Specifics**



**SF CSI Chapter Meeting**

**Wednesday, January 12, 2011**  
**5:30 - 8:30 PM**  
**Castagnola's Restaurant**  
**286 Jefferson at Jones Street**

**ACCESSIBILITY 2010**  
**NEW ADA STANDARDS**

**Speaker: Dawn Anderson**

Come and learn the latest changes in the state and federal accessibility regulations for 2010! With the 2010 California Code adoption coming this January, and issuance of the revised 2010 Federal ADA Standards by the Department of Justice, it's time to ramp up! AIASCV is presenting these two new seminars before the new year – so, get out of the office, meet friends, and earn one of those required 5 CEU for license renewal!

Dawn Anderson, AIA, CASp, is a registered architect, a California access specialist, an Inspector of Record for the Office of Statewide Health and Planning Department (OSHPD), and ICC certified combination inspector with 30 years of contract document production, quality assurance, and construction administration experience. Her firm, As It Stands, provides quality assurance and peer review services, code research and appeals, and construction inspection for large hospitals and other institutional and commercial projects. Accessibility surveys, reports, as-built documentation, property certifications, and expert witness services are provided for clients desiring to correct existing non-compliant conditions. She teaches building code courses at San Mateo College and for the International Code Council.

**\*\* This program is AIA Registered and qualifies for 1 HSW CEU\*\***

***That's what SFCSI programs are all about ---  
Professional development for design and construction professionals.©***

**RSVP:** Please make your reservations **no later than Monday, January 10, 2011.**  
Go to <http://guest.cvent.com/d/zdqtmf>.

**Cost is \$10 for members of the San Francisco Chapter, \$45 for all others.**  
**RESERVATIONS REQUIRE PRE-PAYMENT.**

**Place:** Castagnola's Restaurant  
286 Jefferson, San Francisco

**Time:** 5:30 PM - 6:45 PM Social Hour  
7:00 PM - 8:30 PM Dinner & Program

**Parking:** Parking is available at the Fishermen's Wharf Parking Lot at Jefferson and Taylor. Castagnola's validates your parking for up to 3 hours. Also accessible using BART, ferry, and Muni.



*President Vivian Volz*

**PRESIDENT'S MESSAGE**

By Vivian Volz, RA, CSI, CCS, LEED AP

**Social Networking the Old-Fashioned Way**

As many of you know, I'm an enthusiastic user of online social networking. CSI got me into Twitter a couple of years ago. I keep in touch with you on LinkedIn, and a few of you on Facebook, too, and I'm a budding blogger.

I have to say, though, nothing online can hold a candle to a good party for reconnecting with CSI friends. The CSI Holiday Party on December 8, 2010, was a surprisingly good party. It's not the first thing that comes to mind when you think CSI, but this crowd can dance!

We have lots of people to thank for this opportunity to meet and enjoy each other's company in a relaxed, happy setting. Without further ado, let the recognition flow!

**Generous Sponsors.** In order to keep the price of entry low, we depended on sponsors for the little extras that made the evening special. Our DJ, the dance floor, our special table decorations, and the party favors were all paid for with sponsorships. Several of our contributors donated even though they couldn't attend the party. We can't thank our sponsors enough!

- Rich Blach** Tremco Incorporated
- Richard Condie** Sherwin-Williams Company
- Dan Caruth** Georgia-Pacific

*Continued on next page*

**MARK YOUR CALENDAR!**

- February 9** – Dinner Meeting
- March 9** – Dinner Meeting
- April 20** – ProFair
- May 11** – Dinner Meeting
- June 8** – Awards Banquet



*Program Chairman Julie Barrett planned the holiday party!*



*Raul Yañez leads the dance*



# San Francisco Chapter Construction Specifications Institute

VOL. XLVII NO. 1 | JANUARY 2011 | NEWSLETTER OF THE SAN FRANCISCO CHAPTER | CONSTRUCTION SPECIFICATIONS INSTITUTE

## Continued from previous page

<b>Brent Fisher</b>	Dryvit Systems, Inc.
<b>Judy Holleran</b>	Henry Company
<b>David Ingram</b>	(as himself)
<b>Bryan Jones</b>	Concrete Waterproofing of CA
<b>Vivian Volz</b>	VVAS

**Decorating and Dancing.** We saw people we hadn't seen in years at the party, and a few of our neighbors from other chapters came for the first time. What was the draw? I think it was the promise of salsa! **Raul Yañez** generously agreed to share his love of dance with us with some lessons in the art of salsa dancing. Once he opened the dance floor, I don't think it was empty for more than a minute for the rest of the night.

The other really remarkable feature of the party was the beautiful and creative table decorations provided by **Dave Ingram** and his friend **Dave Rivera**. Each centerpiece was unique, and each was a lovely conversation piece. We enjoyed a party game near the end of the evening, and each winner claimed a decoration to take home.

**The Planning Team.** First and foremost among the planners, the inimitable **Julie Barrett** had a passion to pull off a memorable, festive event. Julie was unstoppable, and without her early and persistent guidance such a wonderful event could never have happened. Still, I'm glad to say that she didn't have to do it alone. **Paulette Salisbury** contributed vital planning ideas, even though she couldn't attend. **Valerie Waldron** supported the team and led the party game. **Rich Blach** solicited sponsorships. And we couldn't have done it without the good people at **Castagnola's Restaurant**.

Just like any other networking event, success is all in the follow-up. Keep the happy energy flowing by thanking a contributor, calling someone you met at the party, or volunteering to help with next year's event. Keep spreading the joy of CSI!

Vivian Volz, RA, CCS, LEED AP  
President  
San Francisco Chapter, CSI



Mike McCarthy MBA CSI CCPR  
California & Hawaii Regional Manager

216 Avenida Fabricante 101 • San Clemente, CA 92672  
Office: (949) 493-5460 • Fax: (949) 493-5165 • Cell: (949) 412-3444  
Toll Free: (877) GO-4-STEGO (464-7834)  
E-mail: mikemccarthy@stegoindustries.com • www.stegoindustries.com



**Eric Patricio, CSI**  
Architectural Services  
Representative

1057B Commercial St.  
San Carlos, CA 94070  
(650) 595-0333  
Fax (650) 610-4212  
Mobile (650) 544-9759  
epatricio@kellymoore.com  
www.kellymoore.com

PREMIUM QUALITY PRODUCTS



**Julie K. Brown, CSI, CCS**  
Independent specifications consultant

17485 Monterey Road, Suite 203 Morgan Hill, CA 95037  
Phone @ 408.778.0633 ■ Toll Free @ 888.743.7441 ■ Fax @ 408.778.9195

**OUR MEETING PHOTOS ARE  
AVAILABLE FOR VIEWING!**

You'll find a link on our website

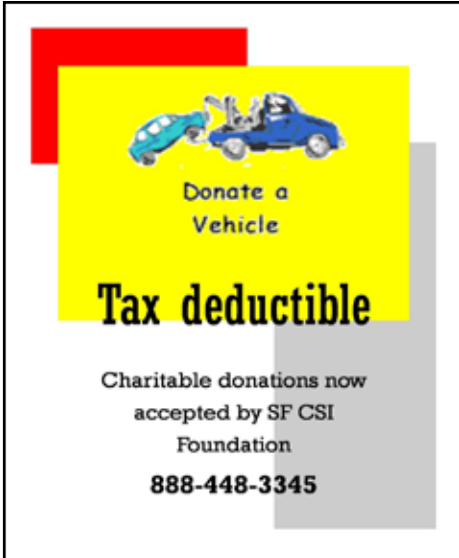
[www.csisf.org](http://www.csisf.org)

On the drop-down menu under Membership



# San Francisco Chapter Construction Specifications Institute

VOL. XLVII NO. 1 | JANUARY 2011 | NEWSLETTER OF THE SAN FRANCISCO CHAPTER | CONSTRUCTION SPECIFICATIONS INSTITUTE



Donate a Vehicle  
**Tax deductible**  
Charitable donations now accepted by SF CSI Foundation  
888-448-3345

## HOT JOBS AT SAN FRANCISCO CSI

By Vivian Volz, RA, CSI, CCS, LEED AP

No, these won't pay the mortgage, but they'll raise your profile in the industry and improve your connections. They'll also help our chapter accomplish its mission.

**Web Transition Team:** This one-time-only task needs a team of two players, as we move our chapter communications from our existing web site to a new CSI Micro-Site. Eric Camin and Joy Davis are available to help with all things technical, and Vivian Volz will kick off the process.

**Program Communications Coordinator:** Work with dynamic Programs Chair Julie Barrett, with initial training from Vivian Volz. Spend about 90 minutes a month online, promoting each monthly dinner with our event management provider, Cvent, and our postcard vendor Vertical Response. Bonus: Learn to work with an easy HTML editor.

**Certification Co-Chair:** Meet the most ambitious, energetic people in the Chapter by helping them navigate their paths to CSI certification. Mentorship and guidance will be provided by Vivian Volz. This job is all about recruiting and delegating, not about doing it all yourself! This is excellent experience for an aspiring project manager.

Not what you're looking for? You can always contact our volunteer coordinator, Bryan Jones, at [bryan@xypexcal.com](mailto:bryan@xypexcal.com), and he'll help you find a CSI job that's right for you.

### PUBLISHED BY THE PUBLICATIONS COMMITTEE

#### EDITOR

Elizabeth Porter, AIA, CSI, CCS  
Topflight Specs  
55 New Montgomery Street, St. 805  
San Francisco  
[porter@topflightspecs.com](mailto:porter@topflightspecs.com)

#### MARKETING/ADVERTISING

Rich Blach, CSI  
[rblach@tremcoinc.com](mailto:rblach@tremcoinc.com)

#### PHOTO EDITOR

Irwin Gozali, CSI  
[irwingozali@yahoo.com](mailto:irwingozali@yahoo.com)

#### EDITORIAL POLICY

1. To inform members of the Chapter and Institute goals and activities directed toward these goals;
2. To inform members of the Chapter and Regional activities, Board actions; and
3. To provide a forum for all members.



*A merry board meeting!*



**CSI CONNECTION**

Contributed By Vivian Volz, RA, CSI, CCS, LEED AP

**Every1Counts Membership Recruitment Campaign Update**

Did you know that you can turn your enthusiasm for CSI into prizes and recognition? CSI's Every1Counts Membership Recruitment Campaign is under way, but it's not too late to join the contest! In November, 20 members recruited 71 new members. CSI has recruited 126 of our targeted 500 new members. The top recruiters of the month were:

- Bennar Korteling, CSI, of Xypex Chemical Corporation, Richmond, VA (20 new members)
- Michael C. Bosco, CSI, CCS, RA, NCARB, Philadelphia, PA (earned 30 recruiter points)

CSI also congratulates Korteling on being the first member inducted into the CSI Recruiter Club. Korteling has earned a total of 53 recruiter points, won \$150 in CSI Bucks and has advanced to the Recruiter Club's Bronze Level. Korteling will be formally recognized and inducted during the Recruiter Club event at CONSTRUCT2011 & The CSI Convention in September.

Earn prizes and recognition! Become a recruiter by simply making 1 phone call, sending 1 email or having 1 conversation. Take the initiative today! Learn more at [www.csinet.org/eoc](http://www.csinet.org/eoc).



*Debra D'Adamo, Western Region Sales Manager for Grace Specialty Building Materials*



*Valerie Waldron and Dave Rivera*

**CSI WEST REGION CONFERENCE 2012**

**The CSI West Region Conference is coming to the San Francisco Bay Area in the spring of 2012!**

**Volunteers are welcome! Please contact:**

Jim O'Keefe at [jamescokeefe@msn.com](mailto:jamescokeefe@msn.com)

or

Hannah Moyer at [hmoyer@watrydesign.com](mailto:hmoyer@watrydesign.com)



*John M. Youngman represents Tormax Automatic Entrances*



*Dave Ingram with Dave Rivera, who is holding one of the table decorations he designed and made.*

## ONE MORE TIME

by Sheldon Wolfe, RA, FCSI, CCS, CCCA, CSC

Last year, our annual election ballot included a proposed bylaws amendment that would have combined the professional, industry, and associate membership classifications into a single group. Although the amendment received over sixty percent of the votes, it fell short of the required two-thirds majority required to pass. The Los Angeles chapter brought the issue before the members at the annual meeting in Philadelphia, where eighty percent of the members voted in favor of again putting membership reclassification before the members, as an amendment proposal on the 2011 ballot.

Readers of this column may recall that last year I questioned the need for changing to a single class of voting members. I still feel the same as I did then about some of the issues, but in the last couple of months I learned a few things that led me to the conclusion that the time for a single class of voting members is long overdue.

When the suggestion to change to a single group of voting members was made a year ago, one of the most common complaints was that some members or potential members were or might be offended by the use of the word "professional", believing it could be seen as a reference to the manner in which members acted, or as a suggestion that some members are better than others.

This was somewhat surprising to me, as we work in an industry that relies on the correct use and interpretation of definitions. If you were to ask random people to name a few professions, it's likely they would say doctor, dentist, attorney, teacher, and perhaps architect or engineer. These are occupations that commonly are referred to as professions; they have in common a requirement for several years of formal education, and, usually, government control of the practice. It is highly unlikely that the same question would elicit contractor, mason, or salesperson as a response.

One of the examples given in support of that argument was that teachers or professors felt slighted because, as just noted, they generally are considered professionals. But, just as anyone can have a profession in the general sense, or behave in a professional manner, so, too, can anyone profess to know a great deal about any given subject - and those same professors would probably object to a master mason claiming to be a professor. Given the derivation of the term professional, and the clear way in which it is used, I don't accept the political correctness argument that we should change the name simply to avoid the possibility that someone might be offended.

***Continued on next page***

**THE PACIFIC ENERGY CENTER**  
at 851 Howard Street, San Francisco  
Presents its series of Programs.  
Most are free of charge and carry  
CEU credits.  
Register at 415-973-7268 or  
[www.pge.com/pec](http://www.pge.com/pec)



*Carolyn and Jack Klemeyer*



*Continued from previous page*

**A bit of background**

So what changed my mind? What led me to decide that it's worth changing to a single class of voting members?

At first glance, it might appear that all voting members (associate, industry, and professional) have equal status; all are allowed to vote, and all are allowed to hold any office. There are, however, a few bylaws requirements that remain from our distant past, when CSI was, in essence, an organization of design professionals.

Since I became a member in 1987, I have accepted as fact that all voting members are equal, and, as we often do, I imagined that was the way it's been, if not forever, at least for a long time. And why not? As long as I can remember, CSI has claimed everyone in the construction industry - "Architects, specifiers, contractors, engineers, building owners, facility managers, attorneys, academics, product suppliers, construction software vendors..." - as potential members. Unlike AIA, AGC, and many other organizations, full rights and privileges are not limited to one type of member. Well, almost.

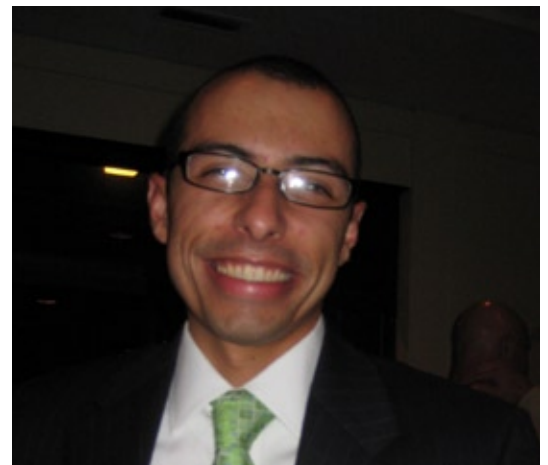
In the beginning, there were only specifiers. In 1948, CSI was formed as an organization for architects and engineers; in other words, for members of the design professions. The bylaws allowed others to join, but those who were not professional members could not vote or hold office. Over the years, as membership grew, the number of members who were not architects or engineers increased. Along the way, the names of member groups changed, so for convenience I'll use the ones we have today, - associate, industry, and professional - and I'll include associate members with industry members. A few of the dates that follow are best guesses based on available information, but most are correct, and at worst a couple are within a year or two.

As the number of industry members grew, so did their influence, and so did their desire for full participation in CSI. Old bylaws not only limited the rights of industry members, but treated them as second-class citizens. If a professional member changed jobs, and no longer qualified for professional membership, the change to industry member was immediate. In contrast, an industry member who changed jobs and became eligible for professional membership had to wait for approval from the Institute Board.

The DC Metropolitan Chapter's history speaks about their 1959 Winter Holiday Program, which was called "Associates Night". The remarkable thing was that nine industry members were allowed ten minutes each to present their products to the professional members



*Stacey Ver and Anne Gregan-Ver*



*Larry Fosnight is President-Elect and ProFair Chairman*



*Linda Stansen and her husband*

***Continued on next page***



*Dave Rivera designed and made the festive holiday table decorations*



*Jack Klemeyer, Carolyn Klemeyer, and Alan Tokugawa*



*Tim Maliepaard samples the delicious shrimp*

***Continued from previous page***

- something that was not permitted at chapter meetings. (But I'll bet they were allowed to pay the bar tab!)

It wasn't until 1963 that industry members were represented on the Institute Board, and then only as directors. The first time an industry member was allowed to serve as an Institute officer was 1964, and then only as treasurer. Industry members were allowed to vote, but only for industry directors.

At some time in the 1960s, industry members were allowed to serve on chapter boards, but they could not serve as chapter president. In 1966, industry members became eligible for Fellowship. In the first year they were eligible, five of the eleven Fellows were industry members. Not a bad showing for second-class citizens!

In 1975, nearly thirty years after CSI was formed, Industry members were given the right to vote, and the office of Industry Vice President was added to the Institute Board. Industry members were at last allowed to serve as chapter presidents - but only after review and acceptance by two-thirds of the chapter's board of directors. You just can't trust a salesman!

In 1986, industry members were made eligible to serve as Institute president, and in 1989, CSI elected its first industry member president.

Last year wasn't the first time that an attempt was made to grant industry members full rights; the records I have indicate that changing to a single member category - thereby giving industry members complete equality with professional members - was considered in 1974 and 2002, and other information suggested that it also may have been considered in other years.

**We're not done yet!**

What we have, then, is a long, slow, and painful journey, gradually removing obstacles to industry participation at various levels of the organization. Even though industry members now are allowed full participation, our bylaws continue to imply that some voting members are better than others.

- To charter a chapter, fifteen members are required, twelve of whom must be professional members, and to maintain a chapter, it must have at least eight professional members. I suspect a chapter that had no professional members might not be as effective as one with similar numbers of industry and professional members, but if they can make it work, why would we stop them?

***Continued on next page***





*Continued from previous page*

- To have a quorum at the annual meeting, a majority of the members present must be professional members. If we have 300 industry members at an annual meeting, and only 299 professional members, does that really mean that we don't have enough qualified people to do business?

The bottom line is that industry members remain second-class members. The favoritism is subtle, and most members probably are not aware that it exists. While preferential treatment may have made sense sixty years ago, CSI has changed since then, and it no longer has a place in our organization. It must be especially galling to the many industry members we continually call on to finance all of our activities.

We have been talking about member equality for more than forty years; it's time to make it reality. Separate but not quite equal just doesn't work. When you get your ballot in February, vote in favor of equality.



*Betsy Porter, Alan Tokugawa, and Carolyn Klemeyer*



*Rose and Bob Garrison*



*Larry Fosnight, Anne Gregan-Ver, and Stacey Ver*

**SAN FRANCISCO  
 BAY AREA  
 REGIONAL MATERIALS  
 DATABASE**

**San Francisco CSI Green Committee**

The Regional Materials Database lists over 400 manufacturers of building products and materials that are manufactured within a 500-mile radius of San Francisco, California. At \$125 for non-members and \$100 for members, it can save hours of searching for locally-made materials for your projects.

And now, by popular demand, two new discounts are available. If you were an Early Adopter of the Database and have your copy of the 2005 version, dig it out. It includes a key that gets you \$75 off the purchase of the current version. And if you are a student your price is \$25, member or not.

**Where can I get my copy?  
 Visit [www.csisf.net](http://www.csisf.net) today!**



**WEST REGION CORNER**

By Craig Mount

**The News**

To find information about the upcoming Chapter and Region events, please go to the Region website [www.csiwestregion.org](http://www.csiwestregion.org) and use it. Please post your chapter activities there so we can enjoy your success and participate whenever possible. Region committees have pages showing their best practices and helpful tools.

In addition, many of you anticipate that this article will give an update on Region activities. And that is a good goal and often done. But this issue, I want to focus somewhere else.

**My Recent Experience with Perception**

I would like to talk about patience and perception. Recently - well for over a year now - I have had one IT problem after another at work as I try to develop a unified specification master, policy and procedures for the mega-company where I work. Fun!!

I surmise that most of you have had IT problems at work or computer problems at home. And I doubt you use the word “fun” to describe them. More like “challenging”? Or maybe “%&\$\*# annoying” is more accurate? Have you lost your patience a couple times? I know I did just yesterday.

So last night after a “challenging” IT problem day, I stopped after work and had dinner and a beer at the bar at the LA Biltmore Hotel. And being the shy guy I am, two professional young ladies and I started talking. I love the Biltmore, especially the inside with its restored crystal chandeliers, marble cherubs on the corner columns, classic deep-colored intricate woodwork. Wow- check it out. But one of the ladies expressed a different view – she described it as depressing and fussy - right out of the movie *The Shining* – a cross between the *Haunted House on the Hill* and the *Titanic*.

We obviously had totally different viewpoints of the exact same space – one icky, one beautiful classic. OMG – what’s wrong with her!! It’s such a beautiful hotel.

One lite beer later and a little more chatting, I came to realize (slowly), she simply prefers clean simple lines and motif – like an *Omni Hotel*. The reason is really unimportant – it’s her perception and reaction – she doesn’t like the Biltmore decor. For me, I appreciate and enjoy simple and clean, or classic and fussy. But does that mean she is

*Continued on next page*





# San Francisco Chapter Construction Specifications Institute

VOL. XLVII NO. 1 | JANUARY 2011 | NEWSLETTER OF THE SAN FRANCISCO CHAPTER | CONSTRUCTION SPECIFICATIONS INSTITUTE

**Continued from previous page**

wrong and I am right? While I want to say yes – I know the answer is NO. Her viewpoint (perception) of the hotel is really just as valid as mine. (This reminds me of my home remodeling a year ago.)

So back to the IT issues. After dinner, I walked back to the office late last night and reread my latest direction to the IT person. Could he possibly have read my clear concise complete instructions differently than I intended? Did he have a totally different perception of the same email and problem? Is that possible? Duh. That’s exactly what happened. Could I have taken a few moments earlier in the day, before I lost my patience, and seen the same thing? Yep, probably.

So in this holiday season, when our emotions may be on a roller coaster ride with family and holiday pressures, try to take a moment and consider that someone else may see something 180 degrees different from what you see, even in the exact same situation. And it’s ok. I do not know anyone who gets out of bed in the morning and says to themselves “Gee I am going to do a crappy job today and make life as difficult as I can for everyone else”. So go hug your IT person or your computer. Rejoice in other people’s viewpoints. Appreciate your own. Be patient - give people a break. Smile and have good cheer. Give yourself a break. That will probably be the greatest gift you can give.



Liesl Morell, Vivian Volz, Valerie Waldron, and Dave Ingram



Liesl Morell, Raul Yañez, Vivian Volz, Greg Epstein



*Salsa lessons from Raul Yañez*

The City and County of SF  
 Department of Building Inspection

**Presents a series of free  
 BROWN BAG LUNCH TALKS**

3rd Thursdays, Noon to 1:30 PM  
 at 1660 Mission Street, Room 2001  
 (Second Floor)

Contact Laurence Kornfield  
 415-558-6205

The Department welcomes you to attend a series of informal, general information talks presented at no charge to the public and City staff. Bring your lunch. Coffee and other drinks will be provided.

**NO USERNAMES, PASSWORDS, OR  
 DOWNLOADS REQUIRED**

By Richard Hubble, AIA, CCS

ProFair, the annual product fair sponsored by San Francisco Chapter CSI, is the largest, locally-sponsored showcase of construction products and services in the Bay Area. As an architect, independent specifier, and 30-year attendee, I find the annual ProFair an extremely valuable opportunity to speak directly with representatives of some major manufacturers. If asked my top three reasons for attending ProFair, I would identify:

**1. Networking - That Personal Touch**

Talking to a professional product representative about your current project or design problem “puts a face to a name.” When you need to call a rep later for more information, you’ll be remembered. Plus, the broad spectrum of manufacturers represented gives attendees the opportunity to do a lot of networking in one place.

**2. Knowledge - How, Not Just What**

Product reps are building technology consultants in their own right. They offer advice and experience on applying products and systems to real-world conditions, not only the idealized conditions displayed online. And the one-on-one discussion allows for easy follow-up questions so you can get to the crux of your issue and clearly identify an optimum solution.

**3. Look, AND Touch**

Many of us don’t get the chance to visit jobsites on a regular basis, so product displays, demonstrations, and samples give us a real-world, tactile understanding of materials, products, and systems that you don’t get from online research.

As for me, I am looking forward to this year’s San Francisco CSI **ProFair 2011** to be held on Wednesday, April 20, from 4 PM to 7 PM, at the Mission Bay Conference Center at UCSF.



*Alan Tokugawa, Liesl Morrell, Raul Yañez, and Vivian Volz*

**PROFAIR 2011**

**April 20 • 4 pm to 7 pm**

UCSF Mission Bay Conference Center  
 1675 Owens Street, San Francisco

Exhibitors: Last year sold out quickly! Reserve your spot as soon as possible. For details contact Larry Fosnight at (707) 238-5175 or [lfosnight@assaabloydss.com](mailto:lfosnight@assaabloydss.com).



San Francisco Chapter

**Construction Specifications Institute**

PO Box 2356  
San Francisco, CA 94126-2356  
415-294-3800  
mail@csisf.org  
www.csisf.org

---

*Knowledge for Creating and Sustaining the Built Environment*

CSI membership is composed of a cross-section of the construction industry - architect, engineers, contractors, developers, manufacturers, suppliers and representatives from allied industries. Chapter activities reflect the unbiased concerns of the entire industry - not one section of it. Members through the Chapter, Region and Institute have the opportunity to contribute their views and experience to the improvement of specifications and other contract documents.

**Board Members 2010-2011**

President	Vivian Volz	415-244-6756	vivianvolz@comcast.net
President Elect	Larry Fosnight	707-238-5175	lfosnight@assaabloydss.com
Vice President, Industry	Tim Maliepaard	916-847-8447	tmaliepaard@oldcastlebe.com
Vice President, Professional	Stephen Teeple	415-777-9422	steeple@bparch.com
Secretary	Paul Miller	510-251-0582	paul.miller@grace.com
Treasurer	Dave Ingram	415-370-6331	daveingram@sbcglobal.net
Region Director	Robert Mosblech	650-954-5636	rjmosdal@flash.net

**Directors**

Director, Industry	Richard Blach	925-484-9223	rblach@tremcoinc.com
Director, Professional	Julie Barrett	650-464-2550	jbare_1999@yahoo.com
Director, Professional	Suk-King Yiu	415-690-9259	suk-king.yiu@hok.com
Director, Professional	Rick Scheuer	415-546-6033	rjscheuer@gmail.com
Past President, Advisor	Jim O'Keefe	415-310-5896	jokeefe@frazee.com

**Chairs**

Awards	Michael Wolfe	510-452-6383	mwolfe@scscertified.com
Certification & Education	Vivian Volz	415-244-6756	vivianvolz@comcast.net
Hospitality	Tim Maliepaard	916-847-8447	tmaliepaard@oldcastlebe.com
Fundraiser / ProFair	Larry Fosnight	707-238-5175	lfosnight@assaabloydss.com
Membership	Eric Patricio	650-610-4211	epatricio@kellymoore.com
Marketing	Rich Blach	925-484-9223	rblach@tremcoinc.com
Programs	Julie Barrett	650-464-2550	jbare_1999@yahoo.com
Publications	Elizabeth Porter	415-546-6033	porter@topflightspecs.com
Website	Lee Gauna	650-400-8465	lee.gauna@hilti.com
Operating House	Gloria Abston	650-598-7607	gjabston@msn.com

**Task Teams**

By-Laws	Peggy White	408-393-8422	peggy@white-greenspec.com
Operating Guide	Alann Ramirez	415-248-1284	alannramirez@hillintl.com
Long Range Strategy	Robert Mosblech	650-954-5636	rjmosdal@flash.net
West Region Conference 2012	Jim O'Keefe	415-310-5896	jokeefe@frazee.com
Strategic Communications	Vivian Volz	415-244-6756	vivianvolz@comcast.net